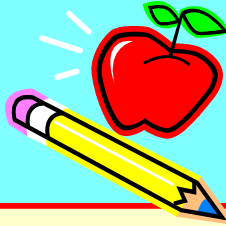




**Jump into
Summer!**



**Lighthouse Christian
School**
Phone: 302-732-3309
28157 Lighthouse Xing
Summer 2023

Mrs. West's First Grade

What can you do to help your child this summer?

- Read together for 15 minutes a day!
- Pick one or two daily Summer Packet activities in each tabbed section.
- Practice reading "Dolch" sight words.
- Practice addition & subtraction facts up through 13.
- Practice skip counting by 2's, 3's, 5's, 10's, and 25's.
- Practice coin combinations.
- Practice tying shoes!!
- Websites:
<https://mathathome.mathlearningcenter.org/grade/1> (for math challenges)
www.getepic.com (stories read to your child)
www.mobymax.com (Used by your child at LCS)

Hopping through the summer!



Suggested MobyMax for Summer*:

Monday = Fact Fluency (15min.)
Tuesday = Reading Stories (20 min.)
Wednesday = Phonics Sounds or Blending
and Spelling List (1 set each)
Thursday = Math (20 min.)
Friday = Language (20 min.)

*Any time in is beneficial, even just 20 minutes each week!

The "Summer Practice" Packet is a Grade!

The LCS Administration requested that teachers create a summer packet for each student to curb skills regression. The packet will be part of each child's Fall grades.

Work Review: A parent or caregiver needs to check the child's work and review errors with the child.

Grades:

100% = Completed packet showing evidence of effort

75-80% = 75% of packet completed

60-74% = Incomplete (up to 50%), but some effort

0% = Showing less than 50% completion

Each Week (12 weeks):

- 1 Math Speed Drill square or a half-sheet of facts in the back of the packet
- front/back of a Language Arts page
- 1 side of an "Animals" copying page
- 1 Creative Writing of 6 sentences
- 1 page of handwriting practice
- 1 Scripture copying page
- 1 front/back of a math sheet
- Daily Moby Max

Moby Max Directions:

Please see the back of this sheet.

Moby Max

1. Open LCS's unique URL in your browser.
<https://www.mobymax.com/de73>
2. Select the "As a Parent" option at the top of the page.
3. Enter the school's code: **de73**
4. Enter the **student's username** (located on the inside pocket of your child's "Adventure" folder).
5. Enter the **student's password** (located on the inside pocket of your child's "Adventure" folder).



Bible Quote:

Whatever your hand
finds to do,
do it with all your might.
Eccles. 9:10

Dear Family,

When the school year begins, the end seems so far away, but here we are! Thank you so much for all your support throughout the year. I enjoyed teaching your child! I hope your summer is relaxing and full of great memories with your family!

May the Lord bless you!

Mrs. West

Contact Information:

Mrs. West, First Grade
kwest@lighthousechristianschool.com
Class DoJo or 302-732-3309